

AIRMATIC®

WE'LL HANDLE IT.



MAX

REBAR & MESH TOOLS

CORDLESS TOOLS FOR CONCRETE CONSTRUCTION

AIRMATIC

284 Three Tun Rd. Malvern, PA 19355

215.333.5600

infocenter@airmatic.com

airmatic.com

SAVE TIME, MONEY, AND INCREASE PRODUCTIVITY!

MAX® is a leading international manufacturer of battery operated concrete tools. With more than 65 years of manufacturing experience, MAX has been developing innovative, state-of-the-art products that set industry standards for quality and reliability.

AIRMATIC, with 60 years of experience in the precast concrete industry, was one of the first, and now one of the largest, Stocking Distributors of MAX Battery Operated Concrete Construction Tools. We maintain one of the nation's largest inventories of tools, wire, parts, and accessories and ship most orders the day they are received. We are an Authorized Service Center with factory-trained mechanics, so if your tools need maintenance or repair, you can count on us for prompt, professional service.

Wherever rebar is used to strengthen the structural integrity of concrete in precast, construction or industrial applications, MAX Rebar Tiers are on the job. During the almost 20-years since MAX developed the world's first battery-operated rebar-tying tool, MAX has led the industry with innovative manufacturing technologies, producing faster- and tighter-tying, longer-lasting, and safer-operating rebar tying tools. In studies conducted by the National Institute for Occupational Safety and Health (NIOSH), the Health

Construction Safety Association, and other regulators and industry authorities, MAX Rebar Tiers were shown to significantly reduce hand, wrist, and forearm injuries while allowing workers to use a free hand to support their trunk (and thereby reduce back disorders) while tying. Also, when an extension handle-bar was used with a Rebar Tier, workers were able to tie rebar while standing erect, minimizing trunk flexion, and, therefore, lost-time back injuries.

MAX Rebar Tiers have been proven to be so important in reducing injuries that rebar ironworkers, aka, rod busters or rodworkers, increasingly support their use on every job, while both union and non-union contractors benefit from reduced Workman's Comp MOD Factors. When compared to hand tying, MAX Rebar Tiers have been shown to significantly reduce labor costs, tying rebar more than five (5) times as fast. In customer tests, MAX Tiers have outperformed other brands by 50% to 80% in tool uptime and maintenance costs.





Handles In Low Position

Adjustable Two Handed Operation

Ergonomic Designed Extended Frame

Utilizes the TWINTIER System

2 NOSE ATTACHMENTS INCLUDED



Long Nose

Short Nose

Long Nose Requires at least 2" clearance between chaired rebar and the ground. For smaller clearance, down to 1-1/8", please use the Short Nose attachment. This specification varies by rebar combination.

THE TWINTIER SYSTEM

- **Faster Tie Speed:** Dual Wire Feed Mechanism increases productivity with one twin wrap.
- **Cost Saving:** Precise amount of wire needed to form a tie, reducing wire usage.
- **Shorter Tie Height:** Less concrete is needed to cover the tie.

THE STAND-UP REBAR TIER!

The **RB401T-E TWINTIER** is the newest edition to our Rebar Tier line. This model positions the Rebar-Tier to the end of a 3.5 ft shaft.

REDUCES BACK STRAIN

The RB401T-E is an ergonomic solution for backbreaking slab work.

ADJUSTABLE HANDLES

Users can adjust the handles to 2 positions, to find the most comfortable fit for their height.

TRIGGER-LESS TECHNOLOGY

An automatic contact mechanism allows the Tool to instantly tie when pushed down over a rebar intersection.

SHORTER TIE HEIGHT

A Wire Bending Mechanism produces a shorter tie height. Less concrete is needed to fully cover a wire tie.

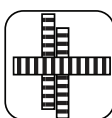
TILT SENSOR

The tilt-sensor prevents the Tool from tying when angled upward.

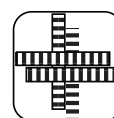
ENCLOSED DESIGN

Greater protection against debris and moisture entering the tool.

RB401T-E	TWINTIER®
Weight	10.2 - lbs (Battery Included)
Dimensions	12-3/4" (H) x 16" (W) x 43-3/8" (L)
Tying Speed	Approx. 0.5 second / tie
Ties per Coil	3 x 3 = 260 ties/coil - 6 x 6 = 180 ties/coil
Wraps per Tie	Dual Wrap per tie (19-Ga Wire)
Ties per Charge	Approx. 4,500 ties/ charge
Rebar Size	Ties: #3 x #3 to #6 x #6 Rebar
Battery Model	JPL91450A; Li-Ion Battery, DC14.4V (4.0Ah)
Charger Model	JC925A Charger
Quick Re-Charge	Approx. 65-Min Full, 50-Min 80%
Tie Wire	TW1061T & TW1061T-USA (Black Annealed), TW1061T-EG (Electro-Galvanized), TW1061T-PC & TW1061T-PC-USA (Poly-Coated) & TW1061T-SS (Stainless Steel)
Standard Equipment	One (1) Battery, Charger, Carrying Case, and Instructional DVD (English & Spanish)



3 Bar Combinations
Maximum
#7 x #4 x #4
(22mm x 13mm x 13mm)



4 Bar Combinations
Maximum
#4 x #4 x #4 x #4
(13mm x 13mm x 13mm x 13mm)

RB443T	TWINTIER®
Weight	5.6 - lbs (Battery Included)
Dimensions	11-1/2" (H) x 4-7/8" (W) x 13" (L)
Tying Speed	Less than 1/2 sec.
Ties per Coil	150 - 265 ties / coil
Wraps per Tie	1 wrap by Twin wire per tie (19-Ga Wire)
Ties per Charge	Approx. 5000 ties/charge
Rebar Size	Ties: #3 x #3 to #7 x #7 Rebar
Battery Model	JPL91450A; Li-Ion Battery, DC14.4V (4.0Ah)
Charger Model	JC925A Charger
Quick Re-Charge	Approx. 80-Min Full, 60-Min 80%
Tie Wire	TW1061T & TW1061T-USA (Black Annealed), TW1061T-EG (Electro-Galvanized), TW1061T-PC & TW1061T-PC-USA (Poly-Coated) & TW1061T-SS (Stainless Steel)
Standard Equipment	Owner's manual, battery, charger, belt hook, carry case



The TWINTIER is the newest edition to our Rebar Tier line. This model relocates the wire spool to below the jaws of the tool. ADVANTAGE: the wire is then fed through the tool and looped twice, to create a twin wire tie as opposed to the 3 wrapped single wire tie in previous models. In a single wrap the TWINTIER produces a stronger, **more secure rebar connection in 30% less time!**

A "wire rod withdrawal mechanism" pulls the wires efficiently and tightly to strengthen the binding force to **increase tying force by 53%.**

The combination of a retraction mechanism of the tie wire, and two-wire loops make the RB443T the ideal tool for structures that require an intense binding force.

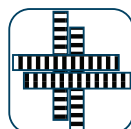
TWINTIER FEATURES

- **Faster Tie Speed:** Dual Wire Mechanism increases productivity with only one wrap.
- **Cost Saving:** Precise amount of wire needed to form a tie, reducing wire usage.
- **Shorter Tie Height:** Less concrete is needed to fully cover a wire tie.
- **Tying Capacity increased:** One charge of battery (JPL91450A 14.4V Lithium-ion battery) can tie up to 5,000 ties and one coil of the TW1061T can make up to 265 ties on #7 x #7 rebar.
- TWINTIER RB443T is used with MAX TW1061T 19-Ga. wire series exclusively.

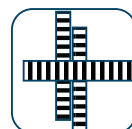
TW1061T TIE WIRE SERIES



19 Ga. wire, ties up to #7 x #7 Rebar



4 Bars (Ties up to)
#5 x #5 plus
#4 x #4



3 Bars (Ties up to)
#8 Plus #4 x #4
#7 plus #5 x #5



BATTERY POWERED REBAR TIERS



RB611T	TWINTIER®
Weight	5.7-lbs (Battery Included)
Dimensions	11-7/8" (H) x 4-7/8" (W) x 13-7/8" (L)
Tying Speed	0.5 second / tie
Ties per Coil	115-205 ties / coil
Wraps per Tie	1 Wrap by Twin Wire Per Tie (19-Ga Wire)
Ties per Charge	Approx. 4000 ties/charge
Rebar Size	Ties: #5 x #5 to #9 x #10 Rebar
Battery Model	JPL91450A; Li-Ion Battery, DC14.4V (4.0Ah)
Charger Model	JC925A Charger
Quick Re-Charge	Approx. 65-Min Full, 50-Min 80%
Tie Wire	TW1061T & TW1061T-USA (Black Annealed), TW1061T-EG (Electro-Galvanized), TW1061T-PC & TW1061T-PC-USA (Poly-Coated) & TW1061T-SS (Stainless Steel)
Standard Equipment	One (1) Battery, Charger, and Instructional DVD (English & Spanish)



TWINTIER FEATURES

- **Faster Tie Speed:** Dual Wire Feed Mechanism increases productivity with only one wrap.
- **Cost Saving:** Precise amount of wire needed to form a tie, reducing wire usage.
- **Shorter Tie Height:** Less concrete is needed to fully cover a wire tie.
- **Tying Capacity increased:** One charge of battery ties 4,000 ties.

The TWINTIER is the newest edition to our Rebar Tier line. This model relocates the wire spool to below the jaws of the tool. ADVANTAGE: the wire is then fed through the tool and looped twice, to create a twin wire tie as opposed to the 3 wrapped single wire tie in previous models. In a single wrap the TWINTIER produces a stronger, **more secure rebar connection in 30% less time!**

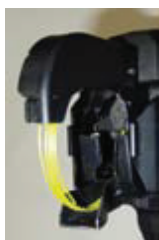
A "wire rod withdrawal mechanism" pulls the wires efficiently and tightly to strengthen the binding force to **increase tying force by 53%.**

The combination of a retraction mechanism of the tie wire, and two-wire loops make the RB611T the ideal tool for structures that require an intense binding force.

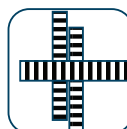


19 Ga. wire, ties up to #9 x #10 Rebar

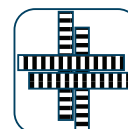
RB655
3 Wrap by
Single Wire



RB611T
1 Wrap by
Twin Wire



3 Bars (Ties up to)
#9 + #8 x #8
#10 + #7 x #7
#11 + #6 x #6



4 Bars (Ties up to)
#6 x #6 + #6 x #6



AIRMATIC

airmatic.com | 215.333.5600 | infocenter@airmatic.com



BATTERY POWERED REBAR TIERS



RB823T	TWINTIER®
Weight	6.0 lbs (Battery Included)
Dimensions	12 - 3/8" x 4 - 7/8" x 15 - 1/8"
Tying Speed	Approx. 0.5 second/tie
Ties per Coil	85 - 165 ties/coil
Wraps per Tie	1 wrap by Twin wire per tie
Ties per Charge	Approx. 4100 ties/charge
Rebar Size	Ties #7 x #7 - #14 x #14
Battery Model	JPL91450A; Li-Ion Battery, DC14.4V (4.0Ah)
Charger Model	JC925A Charger
Quick Re-Charge	Approx. 80 min full, 60 min 80%
Tie Wire	TW1061T & TW1061T-USA (Black Annealed), TW1061T-EG (Electro-Galvanized), TW1061T-PC & TW1061T-PC-USA (Poly-Coated) & TW1061T-SS (Stainless Steel)
Standard Equipment	Owner's manual, battery, charger, belt hook, carry case



Magazine
85-165 tie/coil



1 Wrap of
Double-Wire

LARGEST JAW CAPACITY EVER

The largest jaw size of any battery powered rebar tying tool on the market. This tool makes ties on two pieces of rebar at the same time from **#7 x #7, up to #14 x #14 (Or #18 x #8).**

FAST TYING

The RB823T tying speed is approximately 1/2 second for fast tying.

LOAD ASSIST MECHANISM

New wire loading system automates wire loading for tool.

TW1061T TIE WIRE SERIES



19 ga. Steel
Wire



19 ga. Poly
Coated
Wire



19 ga. Electro
Galv. Wire



19 ga. Buy
America Wire

TWINTIER FEATURES

- **Faster Tie Speed:** Dual Wire Mechanism increases productivity with only one wrap.
- **Cost Saving:** Precise amount of wire needed to form a tie, reducing wire usage.
- **Shorter Tie Height:** Less concrete is needed to fully cover a wire tie.
- **Tying Capacity increased:** One charge of battery (JPL91450A 14.4V Lithium-ion battery) can tie up to 4,100 ties and one coil of the TW1061T can make up to 85-165 ties on #7 x #7 to #14 x #14 rebar.





RB218	REBAR TIER
Weight	5.2 - lbs (Battery Included)
Dimensions	12" (H) x 4-1/8" (W) x 10-3/8" (L)
Tying Speed	Less than 0.8 seconds / tie
Ties per Coil	170-210 ties / coil
Wraps per Tie	3 Wraps per tie (21-Ga Wire)
Ties per Charge	Approx. 3,000 ties/ charge
Rebar Size	Ties: Mesh x Mesh to #3 x #3 Rebar
Battery Model	JPL91450A; Li-Ion Battery, DC14.4V (4.0Ah)
Charger Model	JC925A Charger
Quick Re-Charge	Approx. 65-Min Full, 50-Min 80%
Tie Wire	TW898 & TW898-USA (Black Annealed), TW898-EG (Electro-Galvanized), TW898-PC (Poly-Coated)
Standard Equipment	One (1) Battery, Charger, and Instructional DVD (English & Spanish)
Accessories	Extension Bar (JE400) & Holster (JH300)

TIES MESH TO #3 X #3 REBAR!



BRUSHLESS TWISTING MOTOR

The Brushless Electric Motor offers higher efficiency and longer life. It increases ties per charge by 35% when compared to its older model motor. Furthermore, it does not require service caused by brush erosion or dirt on commutator.

BLOW-OUT CHANNELS

Daily blow-out of the Tool with compressed air is recommended and simple, because MAX has added Blow-out Channels which enable easier preventative maintenance cleaning.

ENCLOSED DESIGN

The RB218 is better sealed to keep dirt and debris out of the Tool to extend life.

REBAR TYING APPLICATIONS

Commercial Buildings / Foundations / Road and Bridge Construction / Precast Plants / Radiant Heating Tubes / Electrical Conduits

SELECTIVE WRAPPING TIMES PER TIE

Selective wrapping is now made possible with the Adjustment Dial, which allows you to select 3 wraps per tie or 4 wraps per tie.

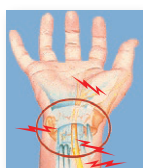


RB398S	REBAR TIER
Weight	5.0 - lbs (Battery Included)
Dimensions	12" (H) x 4-1/8" (W) x 11-3/8" (L)
Tying Speed	Less than 1.0 second / tie
Ties per Coil	120 ties / coil
Wraps per Tie	3 Wraps per tie (21-Ga Wire)
Ties per Charge	Approx. 4,000 ties/ charge
Rebar Size	Ties: #3 x #3 to #5 x #6 Rebar
Battery Model	JPL91450A; Li-Ion Battery, DC14.4V (4.0Ah)
Charger Model	JC925A Charger
Quick Re-Charge	Approx. 65-Min Full, 50-Min 80%
Tie Wire	TW898 & TW898-USA (Black Annealed), TW898-EG (Electro-Galvanized), TW898-PC (Poly-Coated)
Standard Equipment	One (1) Battery, Charger, and Instructional DVD (English & Spanish) Carrying Case
Accessories	Extension Bar (JE400) & Holster (JH300)



REDUCES RISK OF HEALTH PROBLEMS

Just pull the trigger — this simple operation reduces potential wrist damage including carpal tunnel syndrome. Use of the optional extension bar also reduces the risk of back injuries.



Eliminate Carpal Tunnel



Eliminate Low-Back Injuries
Extension Bar-Handles (Optional)

REBAR TYING APPLICATIONS



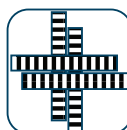
Commercial Buildings / Foundations / Road and Bridge Construction Precast Plants / Radiant Heating Tubes / Electrical Conduits

REDUCES TYING TIME

5 times faster than manual tying. Makes ties in less than 1 sec with consistent tie strength. High speed tying saves you time and money.

LI-ION HIGHER CAPACITY BATTERY

Thanks to its Lithium-Ion Battery Technology, the RB398S Rebar Tying Tool ties approximately 4,000 ties per charge! Less charging time means more productive work on job sites. Also, Lithium-Ion Batteries have no Memory Effect so you can charge the battery at your own convenience.



4 Bars (Ties up to)
#4 x #4 plus
#4 x #4



3 Wraps / Tie

TOOL INCLUDES:

- One (1) DC14.4V Lithium-Ion 4.0Ah Battery (JPL91440A)
- One (1) Battery Charger (JC925A)
- One (1) Belt Hook
- One (1) Plastic Carrying Case



RB518	REBAR TIER
Weight	5.3 - lbs (Battery Included)
Dimensions	12" (H) x 4-1/8" (W) x 10-3/8" (L)
Tying Speed	Less than 1.0 second / tie
Ties per Coil	Approx. 2,400 ties (3 wraps) / charge Approx. 2,200 ties (4 wraps) / charge
Wraps per Tie	3 Wraps per tie (21-Ga Wire)
Ties per Charge	Approx. 2,600 ties/ charge
Rebar Size	Ties: #5 x #5 to #7 x #8 Rebar
Battery Model	JPL91450A; Li-Ion Battery, DC14.4V (4.0Ah)
Charger Model	JC925A Charger
Quick Re-Charge	Approx. 65-Min Full, 50-Min 80%
Tie Wire	TW898 & TW898-USA (Black Annealed), TW898-EG (Electro-Galvanized), TW898-PC (Poly-Coated)
Standard Equipment	One (1) Battery, Charger, and Instructional DVD (english & Spanish)
Accessories	Extension Bar (JE400) & Holster (JH300)

REDUCES TYING TIME

5 times faster than manual tying. Makes ties in less than 1 sec with consistent tie strength. High speed tying saves you time and money.

REDUCES RISK OF HEALTH PROBLEMS

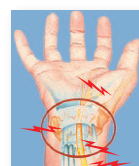
Just pull the trigger — this simple operation reduces potential wrist damage including carpal tunnel syndrome. Use of the optional extension bar also reduces the risk of back injuries.

LI-ION HIGHER CAPACITY BATTERY

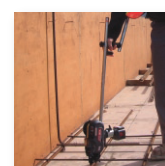
Thanks to its Lithium-Ion Battery Technology, the RB518 Rebar Tying Tool ties approximately 2,600 ties per charge! Less charging time means more productive work on job sites. Also, Lithium-Ion Batteries have no Memory Effect so you can charge the battery at your own convenience.

REBAR TYING APPLICATIONS

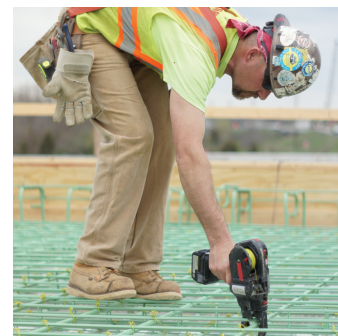
Commercial Buildings / Foundations / Road and Bridge Construction / Precast Plants / Radiant Heating Tubes / Electrical Conduits



Eliminate Carpal Tunnel



Eliminate Low-Back Injuries
Extension Bar-Handles (Optional)





BATTERY POWERED MESH CUTTERS



WMC80	CORDLESS WIRE MESH CUTTER
Weight	6.3 lbs (Battery Included)
Dimensions	5-5/8" X 3-1/4" X 17"
Cutting Range	0.118" - 0.319"
Cutting Speed	Approx. 0.7 Seconds
Cuts Per Minute	Approx. 50 Cuts
Cuts per Charge	Approx. 1000 Cuts W8 (2/0.5GA)
Replacement Blades	WMC80 Blade (PJ99939)
Power Save	Power Off After 10 Mins. Of Non-Use
Battery	JPL91450A; Li-Ion Battery, DC14.4V (4.0Ah)
Charger	JC925A Charger
Voltage	DC 14.4V
Recharge Time	Approx. 80% Capacity - 60 Mins. 100% Capacity - 80 Mins.
Standard Equipment	Charger, Battery, Carrying Case

Double Cutting

Cut two pieces of wire mesh at the same time.

Easy change blade system

Easily change out the blades when dull or worn out.

Trigger Lock

Locks tool for unintended use.

New Easy Operation

When the trigger is released, the blades move to fully OPEN position and STOP.

*The trigger must remain depressed until the material is cut.

Slim Design

Easily change out the blades when dull or worn out.

Interchangeable Battery

The battery used can be interchangeably switched for the mesh cutter.



MESH CUTTER FEATURES

• **Completely Cordless Operation:**

The Cordless Mesh Cutter is a battery operated tool which means no cord or hose required.

• **Fast Cutting Speed:**

Wire mesh can be cut in approximately 0.7 seconds.

• **Power Save Function**

The Cordless Mesh Cutter comes equipped with a Power Save Function. The tool will automatically shut off after 10 minutes inactivity.

• **Safety Guards:**

Helps shield cutting blades to prevent foreign materials from entering the tool.



Minimum	Maximum
0.118" x 0.118" (W1.4 x W1.4)	0.236" x 0.236" (W4.3 x W4.3)

***There are cases where the wire meshes cannot be cut due to conditions such as they are far from each other.**

***Measured on steel, up to tensile wire: 98,000PSI/70kg/mm2.**

***It may not be possible to completely cut materials that are highly elastic.**

APPLICATIONS

Wire Mesh Used For:

Precast Plans, Commercial Buildings, Foundations, Tilt-Up Construction, Pools, Driveways



AIRMATIC

airmatic.com | 215.333.5600 | infocenter@airmatic.com



PJRC160	
Weight	16.8 lbs (Battery Included)
Dimensions	9" X 4" X 15 1/4"
Motor	Brushless DC Motor
Battery	JPL92250A ; Li-Ion Battery, DC 25.2 (3.0Ah)
Maximum Cutting Rebar Size	#5 X #5 Rebar Size
Cutting Speed	> 3.5 seconds (#5 X #5 rebar)
Cuts per Charge	Approx. 170 cuts (#5 X #5 rebar) Approx. 290 cuts (#4 X #4 rebar)
Charger	JC925A Charger
Head Rotation	Full 360° Rotation

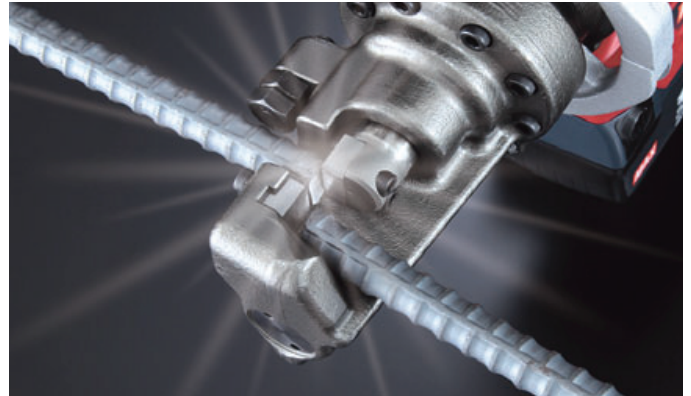
MOST CUTS PER CHARGE! ONLY 3.3 SECONDS PER CUT!

With its high-powered 25.2V, 3.0Ah Lithium-Ion Battery, the MAX PJRC160 has the fastest rebar cutting time in the market at 3.3 seconds per cut.

MAX PJRC160 3.3 Secs (#5 X #5 Rebar)

"A" Company 4.9 Secs

"B" Company 5.5 Secs



BRUSHLESS TWISTING MOTOR

The Brushless Electric Motor offers higher efficiency and longer life. It increases ties per charge by 35% when compared to MAX's older model motor. Furthermore, it does not require service caused by brush erosion or dirty commutator.

TOOL KIT INCLUDES:

- PJRC160 Rebar Cutting Tool
- One (1) Battery Charger (JC925A)
- One (1) 25.2V Lithium-Ion 3.0Ah Battery (JPL92250A)
- Plastic Carrying Case





MAX JPL91450A
Li-Ion Battery

MAX JPL91450A Lithium-Ion Battery
for RB218, RB398S, RB401T-E, RB518, RB443T,
RB611T, RB823T



MAX JPL92550A
Li-Ion Battery



MAX JC925A
Charger

MAX JC25A Charger
for the JPL91450A and JPL92550A Li-Ion Battery

By purchasing Genuine OEM MAX wire from AIRMATIC, our customers can be assured they are getting quality wire that is manufactured for optimal performance, and designed to work together with MAX Rebar Tiers for the greatest reliability, speed, and tie tightness. Non-OEM, and clone wire does not meet the high quality and performance standards of MAX wire, and will result in higher failure rates which reduce uptime and increase labor and maintenance costs. MAX wire is made of the ideal grades of carbon steel and stainless steel to suit the environment they must endure. The wire is drawn and dead soft annealed to create the greatest possible ductility which provides a tough but pliable wire which is easy to twist but hard to break. MAX carbon steel wire is sold in 21-Ga (898-series), 19-Ga (1061T-series), or 16-Ga (1525-series) thickness (size based on tool model needed), with each size available in three or four finishes:

TW898: 21-Ga wire; 312-ft/spool; 3 wraps/tie; 120-210 ties/spool (based on rebar size); 50 spools/box.

TW1525: 16-Ga wire; 82-ft/spool; 1 wrap/tie; 120-130 ties/spool (based on rebar size); 50 spools/box.

TW1061T: 19-Ga wire; 215-ft/spool; 1 wrap/tie; 240 ties/spool (based on rebar size); 30 spools/box.

BLACK ANNEALED

This low carbon steel, dead soft annealed wire is coated with a black oxide finish to provide a thin, mildly corrosion-resistant finish. This commonly used wire meets most construction, pre-cast, and pre-stressed concrete industry applications.



Black Annealed:

TW898

TW898-USA

TW1525

TW1061T

TW1061T-USA

ELECTRO-GALVANIZED (EG)

This low carbon steel, dead soft annealed wire is finished with a 5-micron zinc coating to provide greater corrosion resistance. It is ideal for pre-cast or pre-stressed concrete used in marine or other harsh environment applications, or where length of service is important.



Electro-Galvanized:

TW898-EG

TW1525-EG

TW1061T-EG

POLY-COATED (PC)

This low carbon steel, dead soft annealed wire is powder coated with .05mm thickness of yellow polymer (polyester). It is used when tying epoxy coated rebar or other DOT mandated uses, or anywhere a cushioned wire with added protection against corrosion or abrasives is needed.



Poly-Coated:

TW898-PC

TW1525-PC

TW1061T-PC

TW1061T-PC-USA

STAINLESS STEEL (SS)

This stainless steel rebar tie wire is specifically used for tying steel rebar with epoxy coatings, which are applied by manufacturers to prevent corrosion. This makes it particularly suitable for applications in bridge and highway construction where durability and corrosion resistance are crucial.



Stainless Steel:

TW898-SS

TW1061T-SS



USA Made, BUY AMERICA Certified Wire



REBAR TIER ACCESSORIES



Reduce Low-Back Injuries! — The MAX JE400 Extension Bars for Rebar Tying Tools allow workers to tie rebar while standing erect, minimizing trunk flexion, and, therefore, lost-time back injuries.



MAX JE400 Extension Bar-Handle

for RB218, RB398S, RB611T, & RB518



MAX JH300 Tool Holster

RB218, RB398S, & RB518

Here is a list of Hand Tools required to perform (minor) maintenance on MAX Tools:

PART #	DESCRIPTION
XB93101	Torque Driver Tool Kit Includes: Large & Small Torque Series w/9-Driver Bits (Hex, Nut, & Screw)
666294	7 Pc MET Hex-L Key Set Kit

Keep Your Tools Dry! — The MAX JT450 Tool Cover allow workers to use their rebar tying tools in wet conditions by covering non water resistant components.



MAX JT450 Tool Cover

for RB218, RB392, RB398S, & RB518

AIRMATIC is an Authorized Service Center with Factory Trained Mechanics, if you choose us to repair your tools, you can count on prompt, professional service performed in accordance with MAX manufacturing guidelines

To learn more give us a call **215.333.5600**



AIRMATIC

airmatic.com | 215.333.5600 | infocenter@airmatic.com



This image shows a single sheet of white paper with horizontal blue ruling lines. The lines are evenly spaced and run across the width of the page. There are no margins, text, or other markings on the paper.



AIRMATIC founded in 1944, is a woman-owned Industrial Distributor, with installation and maintenance capabilities, offering equipment, machinery, and shop supplies to the Industrial, Construction, Utility, Government, and Commercial Markets. Our products and services are sold through three business units:

The **MATERIALS MANAGEMENT GROUP** provides products and services to industries that convey, store, transport, and process powders and bulk solids from aggregates, cement, and chemicals to foods, grains, metals, power generation, and waste water treatment applications;

The **SERVICE GROUP** provides fabrication, installation, and maintenance services to improve bulk materials handling efficiency; mechanical clean-out services for silos and hoppers to eliminate material flow problems; and shop repair/rebuilding and modifications services of products sold by the Company.

The **TOOL GROUP** provides power tools, personal protective equipment, materials-handling equipment, shop equipment and MRO supplies used for production, fabrication, assembly, metal removal, maintenance, and storage in manufacturing, construction, utility, and commercial applications.

Our Customers tell us that by choosing AIRMATIC to solve their problems, they gain increased productivity, decreased costs, and a safer, cleaner work environment.



MAX USA CORP, located in Long Island, NY, is the distribution arm in North, Central, and South America of MAX CO LTD, which is headquartered in Tokyo, Japan. MAX is a leading international manufacturer of construction tools and office products. With more than 65-years of manufacturing experience, MAX has been developing innovative, state-of-the-art products that set the industry standards for quality and reliability.

AIRMATIC

284 Three Tun Rd. Malvern, PA 19355
215.333.5600
infocenter@airmatic.com
airmatic.com