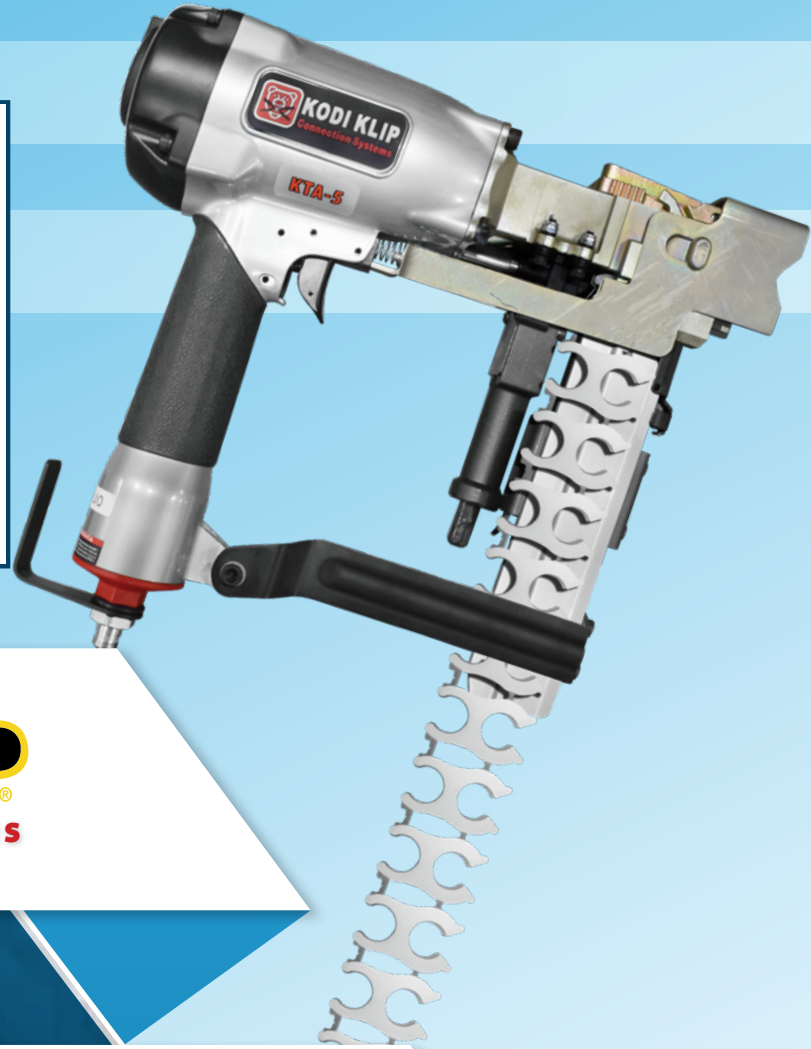


# **AIRMATIC®**

**WE'LL HANDLE IT.**



**KODI KLIP®**  
Rebar Connection Systems

## **REBAR CONNECTING**

**TOOLS, KLIPS, AND ACCESSORIES**

### **AIRMATIC**

284 Three Tun Rd. Malvern, PA 19355

215.333.5600

[infocenter@airmatic.com](mailto:infocenter@airmatic.com)

[airmatic.com](http://airmatic.com)



### MAKES STRONGER CONNECTIONS

The KODI-KLIP rigidly grips saddle joints, dramatically reducing wracking and eliminating unwanted motion. Its patented four-point grip gives you more consistent and stable connections which makes KODI KLIP perfect for site-pour, precast, pre-stressed, and tilt-up concrete applications.

### EASILY LEARNED

The KODI KLIP System is easy-to-use and can be mastered in 10-minutes or less. Spend less time teaching workers how to tie, cut, and loop wire, and use unskilled labor to make rebar connections while deploying skilled labor to where it's needed most.

## WHY TIE WHEN YOU CAN KLIP?

### SAVES TIME

Move from job to job quicker by making connections faster with the KODI KLIP® System. The lightweight, high-powered KLIPPING TOOL attaches KLIPS in milliseconds, enabling you to be more competitive when bidding and to complete jobs on budget.

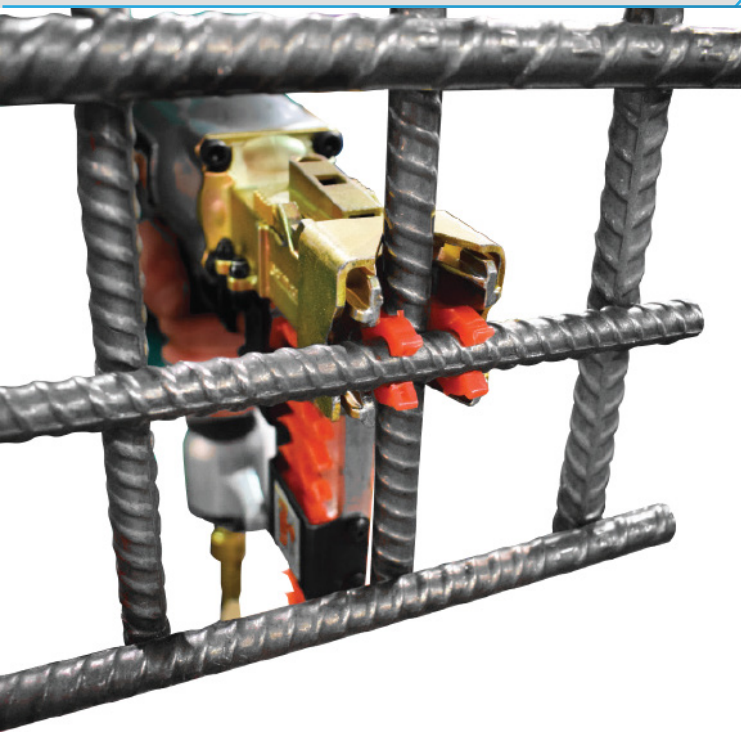
### PROMOTES HEALTH & SAFETY

Protect your rod workers — equip them with a System that is the safest and fastest in the Industry. Prevent wrist fatigue and cuts from tying wire, eliminate burns and flash injuries from welding, and reduce back injuries from bending. Watch accident rates drop, morale improve, and productivity soar!

### SAVES MONEY

Spend less money hiring and training new rod workers to replace those injured on the job, and cut costs by avoiding more skilled labor to weld connections and more expensive rebar grades. Lower costs that erode job profitability and make it harder to compete — like Workers' Comp premiums.





### NON-CORROSIVE

K-KLIPS can't rust, won't degrade, and won't scratch or damage epoxy coated rebar or fiberglass reinforcing rods. K-KLIPS are ideal for marine or harsh applications because they don't corrode or abrade.

### EFFORTLESS APPLICATION

K-KLIPS snap into position in milliseconds, and then rigidly grip the rebar and hold the configuration motionless with just a pull of the KLIPPING TOOL's trigger.



## THE KLIP THAT GRIPS!

### A GREEN SOLUTION

K-KLIPS are molded from recycled polycarbonate resin, a type of thermoplastic known for its high impact strength and resistance to heat and cold, so K-KLIPS won't crack, break, or deform.

### VERSATILE

K-KLIPS firmly grip any cross, parallel, or vertical rebar connections, work on form spacers, cage assemblies, and high density mats – which can be fastened directly on the ground.

### FOUR-POINT GRIP

K-KLIPS provide uniform holding strength at every connection point to eliminate unwanted motion and produce stronger grids. Unlike tie wire, the K-KLIPS provide a four-point grip that guarantees a tight, perfect connection every time!

### EASY-TO-IDENTIFY

K-KLIPS are brightly color-coded by size, making them easy to distinguish and inspect.



**KODI KLIP** Korner Klips provide for easier, faster, 3-way corner strengthening. They eliminate wracked, twisted, or out-of-alignment cages and baskets by rigidly enclosing corners with less rebar bending, no welding, and no double wire tying.



## PNEUMATIC KLIPPING TOOLS

### USER FRIENDLY

The KLIPPING TOOL is compact, lightweight, and ergonomically designed to reduce worker injury and fatigue.

### ENERGY EFFICIENT

The KLIPPING TOOL runs on compressed air from a bottle, tank, small compressor, or a Plant's air supply, providing 70 to 110 PSI / 4.5 to 7.6 Bar and as little as 3 CFM / 85 LPM. Ideal PSI / Bar is based on application.

### QUICK LOADING

The KLIPPING TOOL takes less than 10-minutes to learn how to use, and the simple push 'til-locked, magazine-fed K-KLIP Strips are fast and easy to load or unload.

### TOOL REPAIRS

The KLIPPING TOOL is backed by a 90-day warranty against defects in workmanship and materials. When the Tool does need repair, the work is performed by AIRMATIC's Trained and Certified Mechanics.



AIR PRESSURE (PSI/BAR)	KLIPPING TOOL MODEL
90 - 100 PSI / 6.2 - 6.9 Bar	KTA-3
80 -90 PSI / 5.5 - 6.2 Bar	KTA-4, 5, 6

## BATTERY POWERED KLIPPING TOOL

### SAVES TIME

Connect K-KLIPS to rebar connects in milliseconds.

### CONVENIENT

ONE tool uses TWO K-KLIP sizes. (4/5 tool does all #4/12mm and the #5/16mm clip series).

### USER FRIENDLY

Takes less than 10-minutes to learn.

### SAFE

Concealed mechanism for reduced pinch points.

### STRONGER CONNECTIONS

Dramatically reduces wracking & eliminates unwanted motion.

### EFFICIENT

Offers unhindered movement and ease of use without cords getting in the way.



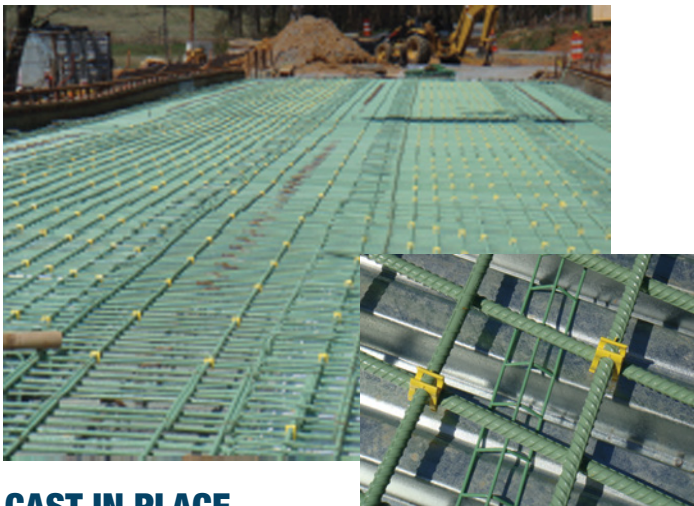
BATTERY	KLIPPING TOOL MODEL
18V/36V lithium-ion Battery	KTB 4-5

## GAIN A COMPETITIVE EDGE!



### PRECAST CAGE WORK

With Yellow 626 K-KLIPs, this cage is able to maintain its shape when free standing, eliminating the need for diagonal support bars and excessive wheel spacers.



### CAST IN PLACE BRIDGE CONSTRUCTION

A Tennessee bridge contractor used the Yellow 626 K-KLIP to tie #6 x #6 rebar in a project converting a bridge from one to two lanes. Workers immediately noticed how much easier and faster the job went – up to 5X faster than using manual tie wire.

### PRE-CAST CONCRETE INDUSTRY

The KODI KLIP<sup>®</sup> System gives you a faster, safer, and better way to make rebar connections. Instead of time-consuming wire ties or expensive welds, the KODI KLIP System will make the majority of the connections in any pre-cast or pre-stressed production process. The K-KLIPS work great on both horizontal and vertical applications, as well as curved, round, and cage work. Cages maintain their shape when free standing, eliminating the need for diagonal support bars and excessive wheel spacers.

### CONSTRUCTION INDUSTRY

The KODI KLIP<sup>®</sup> System is the revolutionary new solution to the century-old problem of fastening rebar. The KODI KLIP no-wire, automated, rebar fastening system works on any construction site, and is ideal for high-density mats in bridges, roads, and slabs. The K-KLIPS' secure, four-way grip holds tight, eliminating wracking and streamlining work flow. Finally workers get a tool that enables them to fasten rebar tighter, faster and with fewer injuries, thereby lowering costs and increasing productivity and profit.



### KODI EXTENSION HANDLE

The KODI KLIP® Extension Handle allows a Worker to operate any KLIPPING TOOL from a standing position, eliminating the need to bend, stoop, or crouch while connecting a rebar grid.

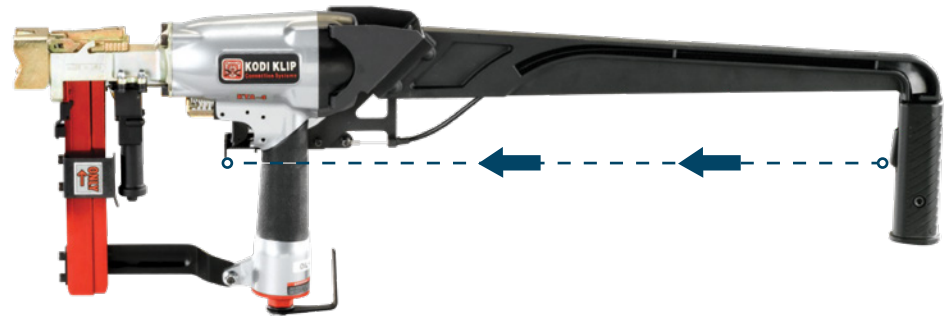
### MEASUREMENTS

Length: 33"

Weight: < 3-lbs

### BENEFITS

- Reduces Back Strain and other Potential Ergonomic Issues
- Provides an Additional 2' of Reach
- Powder Coated Steel Construction prevents rusting
- Adds less than 3-lbs to the Tool
- Handle used on all 4 models
- Reduce Workers Comp Claims



The Extension Handle's trigger is connected by a rubber-housed metal cable to the Tool's trigger to enable a worker to easily shoot the klips from an upright position – making the KODI System ideal for pour-in-place concrete construction.

## GO PORTABLE!

### WITH YOUR KODI KLIP® SYSTEM

#### DEWALT FLEXVOLT CORDLESS AIR COMPRESSOR KIT

The FLEXVOLT 60V MAX\* 2.5 Gallon Cordless Air Compressor offers all of the convenience and portability of the cordless. Its OneTurn Regulator means you don't have to fight with a dial. Like the KODI KLIP System, it's made in the USA with global materials.



### KK5 KORNER KLIP


**KODI KLIP® KORNER KLIPS** for connecting rebar corners provide for easier, faster, more secure 3-way connecting. This more secure connecting method of rebar eliminates wracked, twisted, or out-of-alignment cages and baskets by rigidly enclosing corners with less rebar bending, no welding, and no double wire tying.




**For #5 and 16mm Rebar**  
**200 White Korner Klips per box**



## IMPERIAL

 #3 to #3 Rebar KCS323 Box / 2916 Pcs <b>BLUE</b>	 #4 to #5 Rebar KCS425 Box / 1008 Pcs <b>ORANGE</b>
 #3 to #4 Rebar KCS324 Box / 1568 Pcs <b>VIOLET</b>	 #4 to #6 Rebar KCS426 Box / 560 Pcs <b>LIME GREEN</b>
 #3 to #5 Rebar KCS325 Box / 1008 Pcs <b>PURPLE</b>	 #5 to #5 Rebar KCS525 Box / 1008 Pcs <b>WHITE</b>
 #3 to #6 Rebar KCS326 Box / 560 Pcs <b>BEIGE</b>	 #5 to #6 Rebar KCS526 Box / 600 Pcs <b>LIGHT BLUE</b>
 #4 to #4 Rebar KCS424 Box / 1568 Pcs <b>RED</b>	 #6 to #6 Rebar KCS626 Box / 600 Pcs <b>YELLOW</b>

## KODI KLIP KORNER KLIPS

	<b>KORNER KLIP for #5 Rebar</b> Imperial: KK5 Box / 100 Pcs <b>WHITE</b> <b>KORNER KLIP for 16mm Rebar</b> Metric: KK5 Box / 100 Pcs
--	--

## REVERSE KLIP\*

	Imperial: #5 to #4 Rebar Metric: 16mm to 12mm Rebar KKM16/12 Box / 1008 Pcs <b>VIOLET</b>
--	--

## METRIC

 6mm to 10mm Rebar KKM6/10 Box / 2916 Pcs <b>PURPLE</b>	 16mm to 16mm Rebar KKM16/16 Box / 1008 Pcs <b>WHITE</b>	 10mm to 10mm Rebar KKM10/10 Box / 2916 Pcs <b>BLUE</b>
 6mm to 12mm Rebar KKM6/12 Box / 1568 Pcs <b>LIME GREEN</b>	 16mm to 20mm Rebar KKM16/20 Box / 600 Pcs <b>LIGHT BLUE</b>	 10mm to 12mm Rebar KKM10/12 Box / 1568 Pcs <b>BROWN</b>
 8mm to 10mm Rebar KKM8/10 Box / 2916 Pcs <b>ARMY GREEN</b>	 20mm to 20mm Rebar KKM20/20 Box / 600 Pcs <b>YELLOW</b>	 10mm to 16mm Rebar KKM10/16 Box / 1008 Pcs <b>TAN</b>
 8mm to 12mm Rebar KKM8/12 Box / 1568 Pcs <b>ORANGE</b>	 10mm to 20mm Rebar KKM10/20 Box / 560 Pcs <b>BEIGE</b>	 12mm to 16mm Rebar KKM12/16 Box / 1008 Pcs <b>LIGHT BLUE</b>
 8mm to 16mm Rebar KKM8/16 Box / 960 Pcs <b>GRAY</b>	 12mm to 12mm Rebar KKM12/12 Box / 1568 Pcs <b>RED</b>	

\* Kodi Klips in almost all cases are required to have the smaller gauge on top of the equal or larger gauge rebar to connect, except for the KKM16/12 which is designed to connect #5 rebar over top of #4 rebar.

## KODI KLIP® KLIPPING TOOL

### HTA-3 KLIPPING TOOL

KLIPPING TOOL for #3 to #3, 6mm to 10mm, 8mm to 10mm, and 10mm to 10mm Rebar

### HTA-4 KLIPPING TOOL

KLIPPING TOOL for #3 to #4, #4 to #4, 6mm to 12mm, 8mm to 12mm, 10mm to 12mm, and 12mm to 12mm Rebar

### HTA-5 KLIPPING TOOL

KLIPPING TOOL for #3 to #5, #4 to #5, #5 to #5, 8mm to 16mm, 10mm to 16mm, 12mm to 16mm, and 16mm to 16mm Rebar

### HTA-6 KLIPPING TOOL

KLIPPING TOOL for #3 to #6, #4 to #6, #5 to #6, #6 to #6, 10mm to 20mm, 16mm to 20mm, and 20mm to 20mm Rebar



**AIRMATIC** founded in 1944, is a woman-owned Industrial Distributor, with installation and maintenance capabilities, offering equipment, machinery, and shop supplies to the Industrial, Construction, Utility, Government, and Commercial Markets. Our products and services are sold through three business units:

The **MATERIALS MANAGEMENT GROUP** provides products and services to industries that convey, store, transport, and process powders and bulk solids from aggregates, cement, and chemicals to foods, grains, metals, power generation, and waste water treatment applications;

The **SERVICE GROUP** provides fabrication, installation, and maintenance services to improve bulk materials handling efficiency; mechanical clean-out services for silos and hoppers to eliminate material flow problems; and shop repair/rebuilding and modifications services of products sold by the Company.

The **TOOL GROUP** provides power tools, personal protective equipment, materials-handling equipment, shop equipment and MRO supplies used for production, fabrication, assembly, metal removal, maintenance, and storage in manufacturing, construction, utility, and commercial applications.

**Our Customers tell us that by choosing AIRMATIC to solve their problems, they gain increased productivity, decreased costs, and a safer, cleaner work environment.**



**KODI KLIP**  
Rebar Connection Systems

**KODI KLIP.** Fastening rebar with wire ties is an expensive process that can injure workers, create construction bottlenecks and increase maintenance costs, while still producing unstable and inconsistent connections. The innovative KODI KLIP Rebar Fastening System eliminates these problems. The KODI KLIP System utilizes a magazine-fed, lightweight, air operated KLIPPING TOOL to shoot molded, recycled, polycarbonate resin KLIPS onto rebar connection points. The K-KLIPS provide a secure, four-way grip which won't damage rebar, corrode, or loosen under load. The System design saves time and effort by enabling the work to be done directly on the surface it is placed on, eliminating the need for lifting and propping-up the rebar while fastening it. The robust K-KLIPS produce far more rigid connections than traditional methods, enabling assembled units to be built and handled safely.

## **AIRMATIC**

284 Three Tun Rd. Malvern, PA 19355

215.333.5600

infocenter@airmatic.com

airmatic.com