

WORKMASTER®

WE FIND A WAY — OR MAKE ONE!



RAILCAR VIBRATORS & ACCESSORIES

Master Distributor

AIRMA TIC®
WE'LL HANDLE IT.

airmatic.com

Ph: 800.332.9770 Int: +1.215.333.5600
Fx: 888.964.3866 Int: +1.215.331.9770

INDUSTRY'S MOST **DANGEROUS, DIFFICULT, DIRTY** JOBS MADE **SAFER, EASIER, & FASTER**

WORKMASTER® has the Railcar Vibrator you need to eliminate the safety and productivity problems associated with the dangerous, dirty, and slow job of unloading railcars. We offer the industry's most-complete line of air Vibrators for pocket vibration or whole-car vibration. Based on factors including: Material being unloaded; Number of cars unloaded per week; Unloading site conditions, such as available compressed air (both pressure [PSI] and volume [CFM]), noise restriction, and site security; the Physical abilities of the site worker(s) (our vibrators weigh between 48-lbs and 110-lbs; and Budget, a Customer can choose from air-operated piston, rotary turbine, rotary HD roller, or motor-driven adjustable eccentric-weight vibrators.



WORKMASTER® Hopper Car Vibrators allow most operators to lift and easily slide a wedge-mount vibrator into the car's pocket, or place a clamp-mount vibrator on the car's side sill. With the right railcar vibrator, even solidly jammed railcars, the kind that put workers into overtime, or dangerous work situations like rodding, poking or banging, can be easily and quickly emptied. The force output of WORKMASTER® Vibrators varies from 1,000 force-lbs to a whopping 14,000 force-lbs, and operate at speeds from 2,000-VPM to 15,000-VPM for easy, fast, and safe unloading.

WORKMASTER® Hopper Car Vibrators are engineered and manufactured to provide dependable, long-term service. Construction materials are chosen for their strength and durability, and we guarantee your satisfaction.

As you'll see, every one of our vibrators can make the job safer and easier. So how do you decide which vibrator is best for your unloading site? Is it the fastest, and most powerful (and also consumer of the greatest CFM), or is it the quietest, or least heavy? Your decision should be based on criteria such as: **(1)** the Flow Characteristic of the material you intend to unload. When the gate is opened, is material jammed solid? Does it begin to flow then stop due to bridging? Does the material tunnel or rat-hole? Does it flow steadily but slowly? The flow problem guides us to how much force and frequency is needed; **(2)** the site's Air Volume (CFM) and Air Pressure (PSI) which enables the vibrator to reach the required force and speed. All vibrators must be fed 80-PSI at start-up (can then be dropped to 60-PSI when sufficient material is flowing), and they must have sufficient air volume (21-CFM to 84-CFM based on model and size). If not, a simple and inexpensive air receiver tank can be installed to supplement plant air. You'll also need to use the correct-size hose, couplings, and fittings – air line restrictions paralyze air vibrators, and gate openers; **(3)** the Compressed Air must be clean and the vibrator needs small amounts of lubrication. Rust, scale, burnt oil, and other debris kills power output and increases maintenance costs. An inexpensive, properly sized and maintained air filter, regulator w/gauge, and lubricator (FRL) is an inexpensive insurance policy to guarantee long, maintenance-free vibrator life. The costs of labor and productivity problems far exceeds the cost of a correct-sized FRL; **(4)** the Budget (our vibrators range in price from ≈ \$600 to ≈ \$3,000 – but don't let the price be the primary determinant; our terms and conditions are flexible and we can usually solve the budget problem). Finally, if you'd like our help in selecting the ideal Vibrator for your site, give us a call. With the thousands of Hopper Car Vibrators we've successfully applied in our 68-years of experience, we're sure we can help you select the Vibrator that best meets your needs.

RAILCAR VIBRATORS & ACCESSORIES

WORKMASTER
WE FIND A WAY — OR MAKE ONE!

With **8 models** of **Hopper Car Vibrators**, which range in speed from **2,000 Vibrations Per Minute (VPM)** to **15,000 VPM**, and range in power from **1,000 Force-Lbs.** to **14,000 Force-Lbs.**, we've got the Vibrator needed to empty your railcars in record time no matter what material is being unloaded.



RAIL-SHAKER™

Hopper Car
Pocket Vibrator



CAR-ROCKER™

Hopper Car
Pocket Vibrator



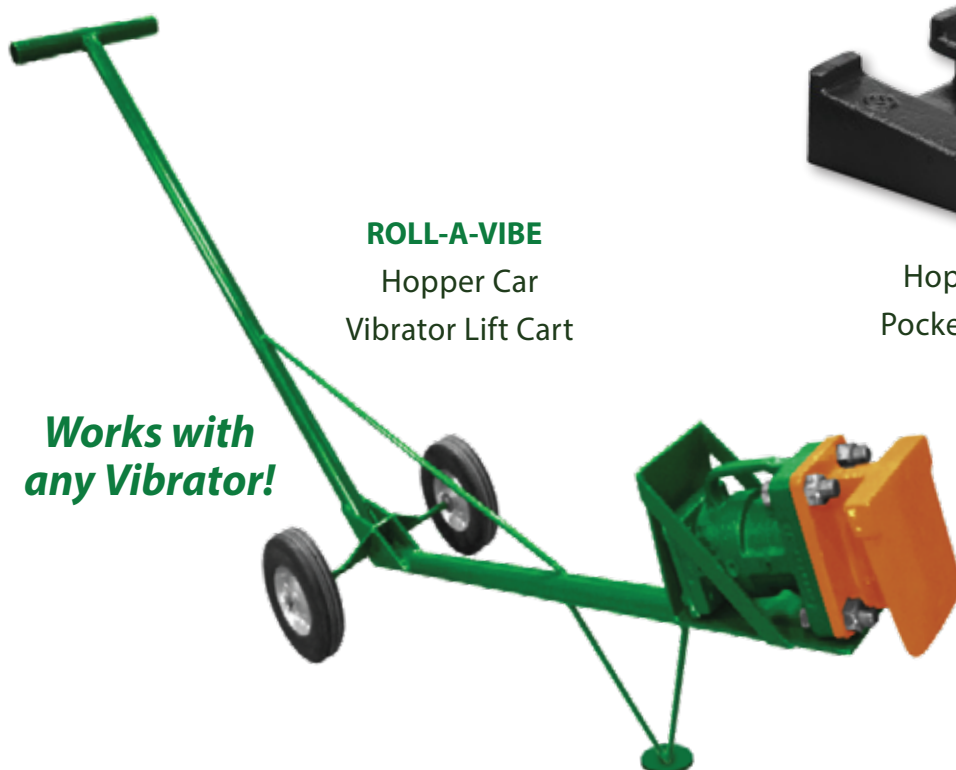
BRUTE®

Hopper Car
Vibrators



WHIRLWIND™

Hopper Car
Pocket Vibrator



ROLL-A-VIBE

Hopper Car
Vibrator Lift Cart



Hopper Car
Pocket Bracket



Cradle Lug Bracket w/
Wedge Mount

**Works with
any Vibrator!**

This pneumatic **Pocket Vibrator Assembly** is a direct impacting piston/linear type Vibrator that pounds the wall of the railroad hopper car like a fast acting sledge hammer to first, break the material-to-wall bond, and then, keep the material stimulated to maintain constant flow. It fits all standard railcar hopper car brackets, and the wedge bracket's top lugs keep the **RAIL-SHAKER™ Hopper Car Vibrator** from becoming jammed in the pocket, so it's easy to remove when the car is empty.

RAIL-SHAKER

The RAIL-SHAKER™ generates 2,200-VPM, and 1,024 lbf at 80-PSI.

IMPROVED SAFETY

Eliminate the safety problems caused by climbing in and around railcars to manually air lance, poke and scrape interior walls and slope sheets. Can be handled by one person.

SMOOTH OPERATION

Accurately ground and high-polished alloy steel piston reciprocates in a precision machined cylinder for smooth, trouble-free operation time-after-time.

MINIMAL MAINTENANCE

When used with a Filtered, Regulated, and Lubricated air supply the Vibrator requires minimal maintenance usually only after each 40-hours of operation.

IMPROVED UNLOADING EFFICIENCY

An unpainted, precision-machined, wide base provides a flat mount which guarantees maximum transfer of vibrator force to reduce unloading time by as much as 30%.

HEAVY-DUTY CONSTRUCTION

Rugged ductile iron body for improved strength to weight ratio and a heavy-duty gasket means positive sealing over the Vibrator's lifetime.

CONSERVE ENERGY

HD starter spring means instant, any position starting at low PSI. Efficient operation enables the Vibrator to use less air than rotary vibrators with comparable force.



PART #

13-15210

POWERFUL LINEAR VIBRATION

INSTANT MATERIAL FLOW

MINIMAL MAINTENANCE

EASY-TO-HANDLE

CAR ROCKER™

HOPPER CAR POCKET VIBRATOR

WORKMASTER®
WE FIND A WAY — OR MAKE ONE!

This series of pneumatic **Pocket Vibrator Assemblies** is available in 3 sizes making it ideal for a wide range of Bulk Solids Handling Applications but especially those that require the highest frequency and highest force.

The **CAR ROCKER™** is available in 2 sizes of dual roller-type and 1 size of HD single roller-type Rotary Vibrators to provide extreme power for complete and rapid emptying or unloading. With only 3 HD moving parts, the Vibrators have a long wear life, require little maintenance, and the Assembly is equipped with a comfort-grip side-handle to easily position the Vibrator in the pocket and move it from car to car.

CAR ROCKER

The CAR-ROCKER™ VRH-050 generates 15,000-VPM / 9750 lbf; the VRH-060, 11,000-VPM / 10,400 lbf; the VRH-070, 11,000-VPM / 14,500 lbf at 80 PSI.

IMPROVE

UNLOADING EFFICIENCY

High-frequency and high-force Vibrator Assembly is one of the original heavy-duty vibrators specified for unloading railcars.

PORTABLE OR

PERMANENT MOUNT

CAR-ROCKER™ is available in either portable cradle lug mount or a bolt-on mount depending on your application.

EASY TO HANDLE

Comfort-grip side-handle makes it even easier for one man to easily move from pocket to pocket.

VARIED APPLICATION RANGE

Apply to railcars, hoppers, bins, chutes, molds, screens, forms, and tables to keep even the most stubborn materials flowing as they should.



HEAVY-DUTY CONSTRUCTION

Cast iron housing and hardened steel end plates work perfectly in extreme-duty applications to extend the life of the Vibrator.

GUARANTEED PERFORMANCE

The CAR-ROCKER™ is guaranteed to both energize stubborn material and maintain complete and rapid flow.

SIZE	PART #
VRH-050	16-17119
VRH-060	16-17120
VRH-070	16-17121

HEAVY-DUTY

POWERFUL

EASY-TO-HANDLE

EASY TO MAINTAIN

The unique urethane-encapsulated turbine in the **WHIRLWIND™ High Frequency Turbine Vibrator** produces more power with less noise than any other high-frequency /high force pneumatic turbine vibrator on the market. With an output of over 10,000 force lbs, depending on the application, the WHIRLWIND™ High Frequency Turbine Vibrator delivers twice the force output, while using half the CFM of the most powerful competitive models. The unit mounts easily to weld-on cradle lug brackets or railcar cradle log wedge brackets.

WHIRLWIND

The WHIRLWIND™ generates 9,300-VPM and 10,650 lbf at 80-PSI.

MOVES MORE MATERIAL

Larger unbalance creates greater force output to move your material.

ONE-WORKER PORTABILITY

Built-in handle provides easy portability for use in railcar unloading.

REDUCE OPERATING COSTS

More power, lower air consumption, and longer life than competitive models cuts your lifetime cost of ownership.

GUARANTEED PERFORMANCE

Our High Frequency Turbine Vibrator must work to your complete satisfaction or it can be returned for full credit.

REDUCE MAINTENANCE COSTS

Long-life, high-speed sealed bearings need no lubrication.



REDUCE NOISE

Testing proves noise level up to 10 dB less than competitive models, and within OSHA noise limits.

PART #

12-50005

MORE POWER & LESS NOISE

EASY-TO-HANDLE

MINIMAL MAINTENANCE

SATISFACTION GUARANTEED

BRUTE®

HOPPER CAR VIBRATOR

WORKMASTER®
WE FIND A WAY — OR MAKE ONE!

This pneumatic, low frequency but high force series of Vibrators offers 2 models of wedge mount **Pocket Vibrators** (the CC and CCV4), and a **Whole Car Vibrator** (CCV6) which clamp-mounts onto the hopper car's side sill. These motor-driven, adjustable eccentric-weight **BRUTE® Vibrators** are built for durability and power.



BRUTE®

The BRUTE® CC2.8-2A Pocket Vibrator Generates 3,800-VPM / 1,890 lbf;
the CCV4-3-2A Pocket Vibrator, 4,900-VPM / 4,100 lbf; the CCV6-50-6A
Whole Car Vibrator, 2,600-VPM / 9,600 lbf at 80 PSI.

HEAVY-DUTY CONSTRUCTION

High-Grade Ductile Iron Case provides maximum durability in the toughest applications.

EASY-TO-HANDLE

Dual Handle and Integral Clamp Foot (CCV Models) provide portability and positive mounting.

SAVE ENERGY

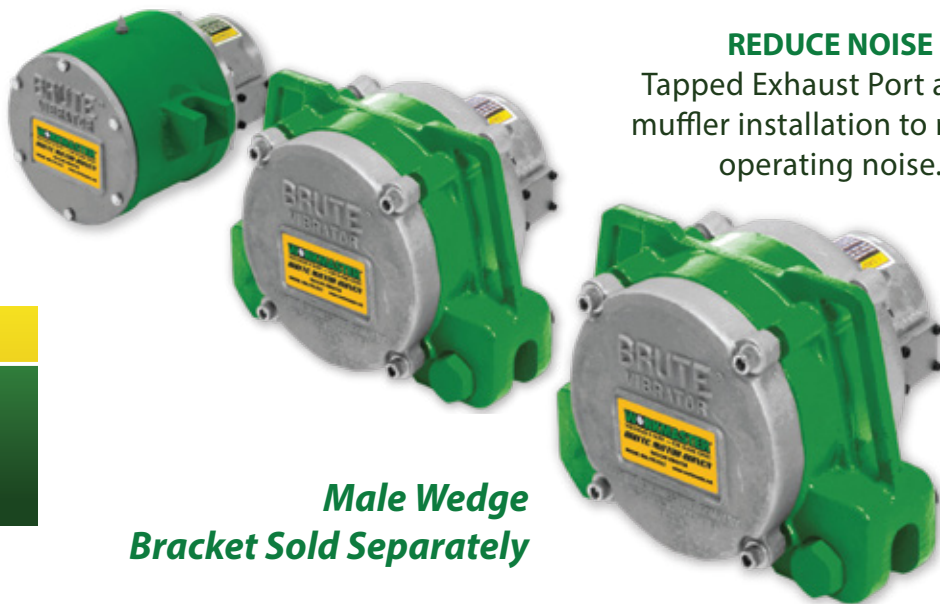
Powerful, efficient Motors for long service life and minimal power consumption.

VARIED APPLICATION RANGE

Adjustable eccentric-weights allow tuning of force output to match application.

REDUCE NOISE

Tapped Exhaust Port allows muffler installation to reduce operating noise.



*Male Wedge
Bracket Sold Separately*

VIBRATOR	PART #
CC2.8-AW-2A	A60-29762
CCV4-AW-2A	A60-29773
CCV6-50-6A	A60-14716

*AW: ADJUSTABLE WEIGHT




HEAVY-DUTY

POWERFUL

EASY-TO-HANDLE

EASY TO MAINTAIN

HOPPER CAR VIBRATOR SPECIFICATIONS

												
	RAIL-SHAKER™ Assembly			CAR-ROCKER™ VRH-050 Assembly			CAR-ROCKER™ VRH-060 Assembly			CAR-ROCKER™ VRH-070 Assembly		
AIR PRESSURE	40 PSI	60 PSI	80 PSI	40 PSI	60 PSI	80 PSI	40 PSI	60 PSI	80 PSI	40 PSI	60 PSI	80 PSI
FREQUENCY (VPM)	1,850	2,000	2,200	9,750	12,500	15,000	7,800	9,800	11,000	8,000	9,200	11,000
FORCE OUTPUT (LBS)	590	845	1,025	4,100	6,000	9,750	5,500	8,700	10,400	12,000	13,300	14,580
AIR CONSUMPTION (CFM)	9.1	17	21	40	54	57	32	41	49	48	60	68
WEIGHT (LBS)	77			65			66			69		



CRADLE LUG BRACKET W/ WEDGE MOUNT

The WORKMASTER® **CRADLE LUG (CL) BRACKET W/WEDGE MOUNT** is the highest quality mount available. It features heavy-duty, cast steel construction, and the seat of the wedge bracket is machined to match the curve of the CAR-ROCKER™, WHIRLWIND™, and BRUTE® CC2.8 vibrator bodies, ensuring complete contact for a secure mount.

PART #

32-17325

HOPPER CAR VIBRATOR SPECIFICATIONS



**WHIRLWIND™
Assembly**



**BRUTE®
CCV4-2A Assembly**



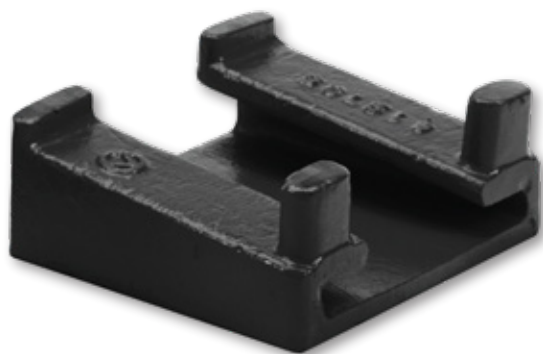
**BRUTE®
CCV6-50-6A**



**BRUTE®
CC2.8-2A Assembly**

	WHIRLWIND™ Assembly			BRUTE® CCV4-2A Assembly			BRUTE® CCV6-50-6A			BRUTE® CC2.8-2A Assembly		
AIR PRESSURE	40 PSI	60 PSI	80 PSI	40 PSI	60 PSI	80 PSI	40 PSI	60 PSI	80 PSI	40 PSI	60 PSI	80 PSI
FREQUENCY (VPM)	6,500	8,500	9,300	3,400	4,200	4,700	2,000	2,200	2,600	3,800	4,600	5,000
FORCE OUTPUT (LBS)	5,158	8,615	10,560	2,400	2,500	4,400	5,683	6,877	9,605	1,890	2,765	3,270
AIR CONSUMPTION (CFM)	21	25	28	37	50	56	39	44	84	38	51	63
WEIGHT (LBS)	64			90			110			72		

HOPPER CAR POCKET BRACKET



Missing or damaged railcar wedge brackets combined with stubborn, slow moving material, make unloading railcars nearly impossible. WORKMASTER®'s **Weld-On HOPPER CAR POCKET BRACKET** provides an easily installed mounting pocket that transmits maximum vibration from the vibrator to the railcar. Always keep a pair of these cast iron brackets at your unloading site and you'll never be slowed by missing or damaged brackets again!

PART #

32-17327

This practical and economical portable **Vibrator Lift Cart** is a lightweight, highly maneuverable method of transporting and placing any make/model of railcar vibrator into a hopper car pocket bracket. The **ROLL-A-VIBE™ Vibrator Lift Cart** is designed to reduce employee injuries and increase productivity. Leverage efficiency and ease-of-operation make the ROLL-A-VIBE™ Vibrator Lift Cart the preferred method of handling hopper car vibrators at any hopper bottom railcar unloading site. Eliminating lifting and maneuvering Railcar Pocket Vibrators.

ROLL-A-VIBE

Eliminate, back and hand injuries caused by lifting bulky or heavy railcar vibrators.



ITEM NAME	PART #
ROLL-A-VIBE™ for Air Piston Vibrator	30-20025
ROLL-A-VIBE™ for Air Roller Type Vibrator	30-20030
ROLL-A-VIBE™ for Electric Vibrator	30-20035

EASY, SAFE, 1-WORKER OPERATION

LIGHTWEIGHT, MAX LEVERAGE DESIGN

BACK & HAND INJURIES ELIMINATED

EFFICIENCY INCREASED



ELIMINIZER AIR FILTER/DRYER WITH STAND

Stop water and dirt from entering your Hopper Car Gate Opener or Railcar Vibrator with WORKMASTER®'s **ELIMINIZER POINT-OF-USE AIR DRYER**. This unique airline accessory incorporates patented inverse flow technology and is engineered specifically to remove condensed liquids and dirt from the airlines feeding your Railcar Gate Opener, Hopper Car Air Vibrator or Hopper Car Connector. This Air Filter / Dryer Assembly not only prevents airline dirt and moisture from damaging any pneumatic equipment but also prevents lubrication washout, thereby protecting against rust and excessive wear to internal parts.

- 1" NPT Inlet (flows up to 150-SCFM)
- Stainless Steel Element and Cotton
- Rugged Metal Bowl
- Automatic Drain Cartridge

PART #

82-10424



FRL ASSEMBLY WITH CARRIER

If your Hopper Car Gate Opener is not designed with an In-Line Lubricator, WORKMASTER®'s **FRL ASSEMBLY** is ideal. The Assembly provides the utmost in tool protection by Filtering, Regulating, and Lubricating your Gate Opener's air supply. Weighing only 23-lbs, the FRL Assembly is housed in a rugged frame which can be easily transported to and from the unloading site. Continuous use of this FRL Assembly will keep any air-operated railcar Gate Opener or other pneumatic tools and equipment operating efficiently, will extend its life, and will conserve plant air.

- Universal Fittings
- 40-Micron Filter
- 2" Dia Gauge; 0 -160 PSI
- 16-oz Metal Reservoir Bowl

PART #

82-10330

IN-LINE LUBRICATOR



Designed for the intermittent start/stop operation of Hopper Car Gate Openers and Vibrators, and factory-set to deliver just the right amount of air tool oil, WORKMASTER®'s **IN-LINE LUBRICATOR** is the preferred way to supply the lubrication your air-powered equipment demands. Don't allow your Gate Opener or Vibrators to run dry, keep them well-oiled and long-running with WORKMASTER®'s In-Line Lubricator.

- 1" NPT Threaded Ports (Female)
- 16-oz Metal Reservoir Bowl

PART #

82-40004



TOOL-LUBE™ AIR TOOL OIL

Keep your Gate Opener running longer – up to three times longer – cleaner, with less downtime and greater power by using WORKMASTER®'s **TOOL-LUBE AIR TOOL OIL**. Special emulsifiers allow this unique oil to absorb 10% of its weight in water preventing the formation of rust, gum, and sludge. With regular use of WORKMASTER®'s TOOL-LUBE, you can expect your pneumatic Gate Opener to operate with greater performance, consistency, and reduced noise levels.

PART #

DESC.

36-21010

1 Qt

36-21016

1 Case (12 Qts)



VIBRA-LUBE™ VIBRATOR OIL

The internal parts of Pneumatic Rotary and Piston Type Vibrators are subject to severe stress. These parts require a special type of lubrication. WORKMASTER®'s **VIBRA-LUBE VIBRATOR OIL** is uniquely formulated to coat and protect a vibrator's inner lining and moving parts. With regular use, VIBRA-LUBE can add years of service to the life of your vibrator as well as reduce noise levels and increase air efficiency and power. For a pneumatic vibrator, there is no substitute.

PART #	DESC.
36-21020	1 Qt
36-21024	1 Case (12 Qts)

PIN & RING CONNECTOR

If your unloading site sees a variety of railcars and you're constantly changing the accessories on your Gate Opener, you'll need WORKMASTER®'s **PIN & RING CONNECTOR** to help keep the job moving. The Pin is hardened steel; the Ring is nick-resistant rubber, together they make changing from your 12" Extension to your Universal Joint, to your 20" Extension quick and easy.

WORKMASTER®'s Pin & Ring Connectors are also OSHA-approved because there are no protruding ends that can damage property or injure workers.

PART #	DESC.
32-50124	PIN
32-50000	RING



AIR RECEIVER TANKS

Does your unloading site equipment suffer from such insufficient air pressure (PSI) or air volume (CFM)? If you can't efficiently and effectively operate your Hopper Car Gate Opener, Railcar Vibrator or Hopper Car Connector, a new or larger air compressor doesn't have to be the answer. A WORKMASTER® **AIR RECEIVER TANK** is the cost-effective method to store and deliver the additional compressed air volume and air pressure your unloading site requires at a fraction of the cost of a compressor. All receiver Tanks are built in accordance with the ASME Section VIII Division I Code latest edition. Each Tank is supplied with an automatic drain valve, pressure gauge and safety relief valve, making WORKMASTER® Air Receiver Tanks the cost effective solution to any unloading site air system problems.

HORIZONTAL AIR RECEIVER TANKS & ACCESSORY KITS

SIZE (GAL)	DIMENSIONS (L x W x H)	TANK PART #	ACCESSORY KIT PART #
30	38" x 16" x 18"	31-32202	31-32601
60	48" x 20" x 22"	31-32203	31-32601
80	63" x 20" x 22"	31-32204	31-32602
120	68" x 24" x 26"	31-32225	31-32603
240	84" x 30" x 33"	31-32227	31-32604

VERTICAL AIR RECEIVER TANKS & ACCESSORY KITS

SIZE (GAL)	DIMENSIONS (L x W x H)	TANK PART #	ACCESSORY KIT PART #
30	38" x 16" x 18"	31-32210	31-32601
60	48" x 20" x 22"	31-32211	31-32601
80	63" x 20" x 22"	31-32212	31-32602
120	68" x 24" x 26"	31-32213	31-32603
240	84" x 30" x 33"	31-32215	31-32604



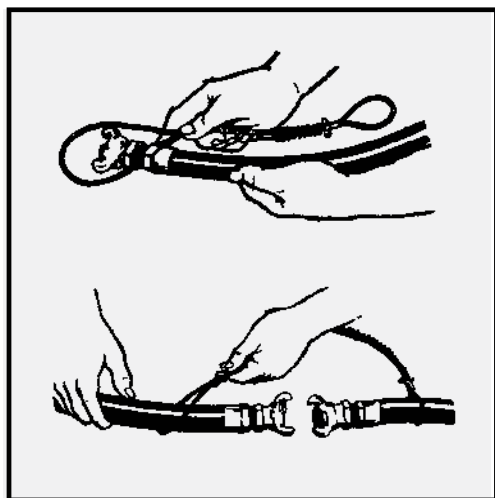
Horizontal Tanks



Vertical Tanks

WHIPCHECK SAFETY CABLE

WORKMASTER®'s **WHIPCHECK SAFETY CABLE** is a safe, positive, economical solution to the problem of injuries caused by broken air hose connections. Easily installed and removed without the use of tools, this simple device is also highly resistant to rust and corrosion. Since it is always attached to the hose, it cannot be lost, and proper installation can be easily verified — even at a distance. The WHIPCHECK is an effective and inexpensive product to insure personnel safety.



Easily installed by depressing spring and looping the wire over the hose on both sides of the connection. Release the spring and the Whipcheck locks onto the hose creating a permanent, dependable safeguard.

Recommended by: OSHA
BUREAU OF MINES
BUREAU OF RECLAMATION
US ARMY CORPS OF ENGINEERS

PART #

74-10010



AIR HOSE ASSEMBLIES

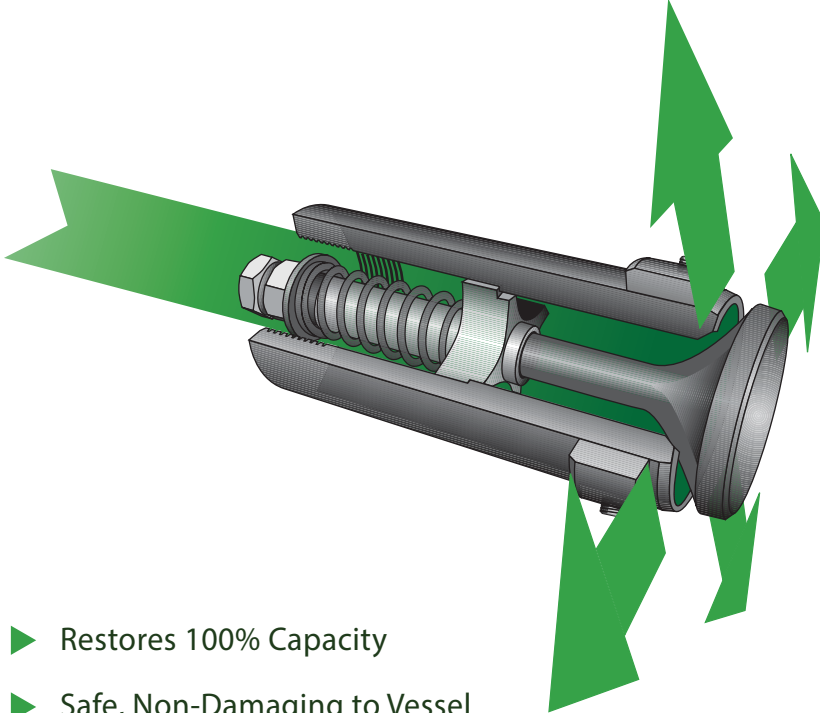
Railcar Gate Openers and Pocket Vibrators are designed to create an efficient and safe work environment. WORKMASTER®'s 1/2", 3/4", and 1" Heavy-Duty **AIR HOSE ASSEMBLIES** come in a range of lengths to keep your Gate Opener and Vibrators operating safely and efficiently at any distance. Each assembly is made from 200-PSI, nick-resistant, red rubber hose complete with universal fittings at each end. Don't allow worn or collapsed, cut or damaged, ready-to-burst air hose turn your unloading station into an accident waiting to happen. Replace worn and/or damaged hose lengths with WORKMASTER®'s Heavy-Duty Air Hose Assemblies.

BEST FOR	DIAMETER	LENGTH	PART #
Gate Openers	1"	10 ft	83-09078-09
		15 ft	83-09118-09
		25 ft	83-09134-09
		50 ft	83-09174-09
Vibrators	3/4"	10 ft	83-09077-09
		15 ft	83-09117-09
		25 ft	83-09133-09
		50 ft	83-09173-09
Vibrators	1/2"	10 ft	83-09076-09
		15 ft	83-09116-09
		25 ft	83-09132-09
		50 ft	83-09172-09

BIN AERATOR FLOW AIDS

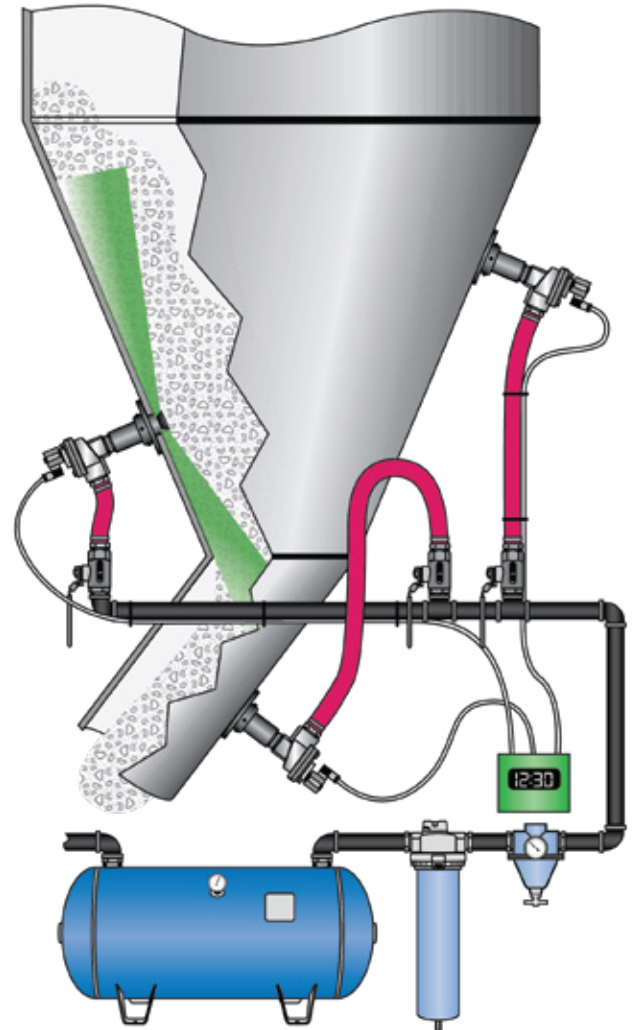
WORKMASTER
WE FIND A WAY — OR MAKE ONE!

BIN-BUTLER™ AERATION SYSTEM



- ▶ Restores 100% Capacity
- ▶ Safe, Non-Damaging to Vessel
- ▶ Installation from Outside the Vessel
- ▶ Won't Jam or Clog Regardless of Material
- ▶ Mounts to Any Structure or Surface
- ▶ Operating Pressure 40 PSI - 125 PSI
- ▶ Operates in Temperatures to 550° F
- ▶ Precision Machined Components
- ▶ Injector Head Warranty 1-Million Cycles
- ▶ Long, Trouble-Free, Continuous-Duty Service
- ▶ Available in Carbon Steel or All Stainless

For a free, no obligation custom proposal, send us the data sheet specifics of your application!



Applications from A to Z!

Adipic Acid; Bentonite; Cement;
Diatomaceous Earth; E.P. Dust; Flour; Grain;
Herbicides; Iron Ore; Jute Products; Kaolin;
Limestone; Meal; Nuts & Seeds; Ore
Preparations; Pharmaceuticals; Quartz;
Resin; Salt; Titanium Dioxide; Uranium;
Verniculite; Walnut Shells; Xanthene Dyes;
Yellow Pine Chips; Zinc Oxides.



MAKE SAFETY PRIORITY ONE!

Owning and maintaining the proper tools and accessories is the first step in creating a safe working environment. All the items in this catalog are designed to not only help open and unload stubborn Railcar Gate, but to do so in the safest possible way.

WHY IS SAFETY IMPORTANT?

- Each year 1 in 8 workers is injured on the job.
- On average, 17 people are killed each day in the Industrial and Construction workplace (safety is not just about preventing injury — it's a matter of life and death).
- Most accidents are caused by carelessness, taking short-cuts, or simple neglect.

While we pride ourselves in the quality and dependability we build into WORKMASTER® products, we caution tool users that it is only prudent to know and follow the simple rules of Safety when using our products, or anyone else's.

FOLLOW THESE SAFETY TIPS:

- Always wear eye protection when near an operating Gate Opener.
- Only use Drive Fittings, Extensions, and Universal Joints that are in good condition. Worn Sockets reduce impact power and could shatter, resulting in personal injury.
- When using a Drive Fitting or Extension and/or Universal Joint, never operate the Gate Opener when not engaged in the Railcar's Capstan.
- Never continue to operate the Gate Opener after the gate is completely open or completely closed.
- Always use the simplest hook-up possible. If your Drive Fitting Extension and/or Universal Joint is not needed, remove tool(s) to reduce wear.
- Never hold Drive Fitting, Universal Joint, or Extension when Gate Opener is running.
- Before every use, visually inspect accessories for damage and cracking; immediately replace all damaged attachments.
- Always wear gloves when hammering Swage Tool into Capstan.
- Disconnect Gate Opener's air supply when changing attachments.
- Never use nuts and bolts to secure attachments to Gate Opener protruding ends are dangerous and against OSHA regulations.

HOPPER CAR GATE OPENERS

WORKMASTER®
WE FIND A WAY — OR MAKE ONE!

ASK US ABOUT OUR OTHER RAILCAR UNLOADING SOLUTIONS



GO-A8-PW

Pneumatic Hopper
Car Gate Opener



GO-A3-PW

Pneumatic Hopper
Car Gate Opener



GO-A13-HA

Pneumatic Hopper
Car Gate Opener



GO-A8-FW

Pneumatic Hopper
Car Gate Opener



GO-A2

Pneumatic Hopper
Car Gate Opener



GO-M04

Manual Hopper
Car Gate Opener



GO-M3

Manual Hopper
Car Gate Opener



GO-E2

Electric Hopper
Car Gate Opener

For more information, request our complete catalog on
WORKMASTER® Hopper Car Gate Openers and Accessories.

WORKMASTER®

WE FIND A WAY — OR MAKE ONE!

WORKMASTER® is a manufacturer of labor savings bulk material handling tools to help safely and efficiently unload, transport, store and process bulk solids from hopper bottom railcars, bulk trailers, bins, silos and chutes. To help Customers gain maximum benefit from our bulk materials handling tools and equipment, we also supply a complete line of operating, mounting, and maintenance products and accessories, such as Timers and Motor Controls, Vibrator Mounts, and Lubricating Oils to help keep your unloading site tools running longer and more efficiently. WORKMASTER products help Customers work more safely and efficiently, increase the lifespan of production-critical equipment, and decrease operating and maintenance costs of tools and equipment used in some of Industry's most dangerous, difficult, and dirty jobs.



Master Distributor

AIRMATIC®
WE'LL HANDLE IT.

airmatic.com

Ph: 800.332.9770 Int: +1.215.333.5600
Fx: 888.964.3866 Int: +1.215.331.9770